

L.E.D. is the New Standard in Lighting. Lumens³ is the New Standard in L.E.D.

PATENTED MULTI-SERVO / STEPPER ASSISTED LIGHTING TECHNOLOGY (S.A.L.T.)™ LED SYSTEMS, MAIN FEATURES:

URIEL CORPORATION S.A.L.T.™ SENSOR OPTIONS

RADIOLOGICAL

BIOLOGICAL

VIRAL

CHEMICAL

BACTERIOLOGICAL

EXPLOSIVES

TEMPERATURE

FIRE

SMOKE

CARBON MONOXIDE

MOTION

SECURITY

AIR QUALITY-GAS TYPE

BAROMETRIC

WIND & WEATHER

SEISMOGRAPHIC

INFRARED

BAR CODE READER

QUALITY CONTROL

RFID

LASER

ID SENSORS

QUALITY CONTROL

MOTION SENSORS

THREAT SENSORS

BIOMETRIC



L.E.D. is the New Standard in Lighting. Lumens³ is the New Standard in L.E.D.

PATENTED MULTI-SERVO / STEPPER ASSISTED LIGHTING TECHNOLOGY (S.A.L.T.)™ LED SYSTEMS, MAIN FEATURES:

URIEL CORPORATION S.A.L.T.™ SENSOR OPTIONS

POTABLE WATER QUALITY

FRESH WATER QUALITY

SALT WATER QUALITY

LIQUID PRESSURE

GAS PRESSURE

FLAMMABLE GAS-LIQUIDS

FOOD SANITATION

ENVIRONMENTAL-ECOLOGICAL

INDUSTRIAL, MANUFACTURING, QUALITY CONTROL

ENGINEERING-SCIENTIFIC

HEALTH THREAT

GPS

COMMUNICATION & CONTROL

WIFI

AUTO-TRACKING SENSORS & AUTO-TRACKING FUNCTIONS

CUSTOM SENSORS

SENSOR DEVELOPMENT



L.E.D. is the New Standard in Lighting. Lumens³ is the New Standard in L.E.D.

PATENTED MULTI-SERVO / STEPPER ASSISTED LIGHTING TECHNOLOGY (S.A.L.T.)™ LED SYSTEMS, MAIN FEATURES:

FURTHER EXCLUSIVE SYSTEMS & FEATURES:

---Enhanced Pedestrian Security LED Lighting™
---Caution, Yellow-Red Alert Lighting™
---Threat Monitoring LED Lighting™
---Sensor Monitoring LED Lighting™
---LED Lighting w/Area Surveillance Reporting™
---Hazard Sensor Enabled LED Lighting™
---Environmental, Weather, Seismographic Sensor Enabled LED Lighting™

For more information on any of our products or services please visit us on the Web at:
www.lumenscubed.com

OTHER URIEL CORPORATION S.A.L.T.™ OPTIONS

CUSTOM LUMENS

HORIZONTAL ROTATION

VERTICAL ROTATION

PERIPHERAL BEAM CONTROL

TANDEM CONTROL

UNISON CONTROL

FLASHING

GROUP CONTROL

OSCILLATION

DIMMABLE

SPAN RADIUS CONTROL

MULTI-CHANNEL NETWORKING

AUTO BEAM/SENSOR CONTROL

MANUAL BEAM CONTROL

**PROGRAMMABLE & MULTIPLE SAVED SETTINGS;
MULTIPLE DATE-TIME CYCLING FUNCTIONS**

**WHITE LIGHT BRIGHTNESS CONSTANCY WHILE SWITCHING
TO OTHER COLORS & AT END OF LED LIFE CYCLE**

WHITE, INFRARED, MULTICOLOR, ULTRAVIOLET

WIRED OR WIRELESS REMOTE CONTROL



Uriel Corporation®

Page 3 of 8

L.E.D. is the New Standard in Lighting. Lumens³ is the New Standard in L.E.D.

PATENTED MULTI-SERVO / STEPPER ASSISTED LIGHTING TECHNOLOGY (S.A.L.T.)™ LED SYSTEMS, MAIN FEATURES:

OTHER URIEL CORPORATION S.A.L.T.™ OPTIONS

**MULTI-ZONE MULTI-SENSOR TRANSCIEVER
ARRAY RESPONSE, MESSAGING, SECURE SYSTEM
CIRCUIT INTERFACE, NETWORKING, REPORTING &
MULTI-TRIGGERING SYSTEM TECHNOLOGY**

**SECURE WIRELESS CONTROL & COMMUNICATIONS
WITH PUBLIC AND EMERGENCY PERSONNEL INTERFACES**

**BI-DIRECTIONAL PUBLIC ADDRESS INTERFACE,
CITY OR EMERGENCY HELP**

SURVEILLANCE, COMMUNICATION & CONTROL

FLEXIBLE CUSTOM MOUNTING & ENCLOSURE OPTIONS

**ADVANCED CONTROLLERS FOR DIFFERENT
APPLICATIONS & CONFIGURATIONS**

THERMAL SHOCK AVOIDANCE TECHNOLOGY

**LONG LIFE LEDS: 130,000-250,000+ HOURS,
~30-57+ YEARS OF LIFE; 70-85%+ Energy Savings**

FURTHER EXCLUSIVE SYSTEMS & FEATURES:

- City Security, Protection, & Communication LED Lighting Grids™
- Border Security LED Lighting Systems™
- LED Lighting w/Directable Communications & Control Technology™
- Hazard Sensor Enabled LED Lighting™
- Environmental, Weather, Seismographic Sensor Enabled LED Lighting™
- Custom Application, Custom Sensor Enabled LED Lighting™
- Grow Lighting for Outdoor Crops, Orchards, Greenhouses, Indoor Plant Growth, and for Hydroponic Farming™

For more information on any of our products or services please visit us on the Web at:

www.lumenscubed.com



Uriel Corporation®

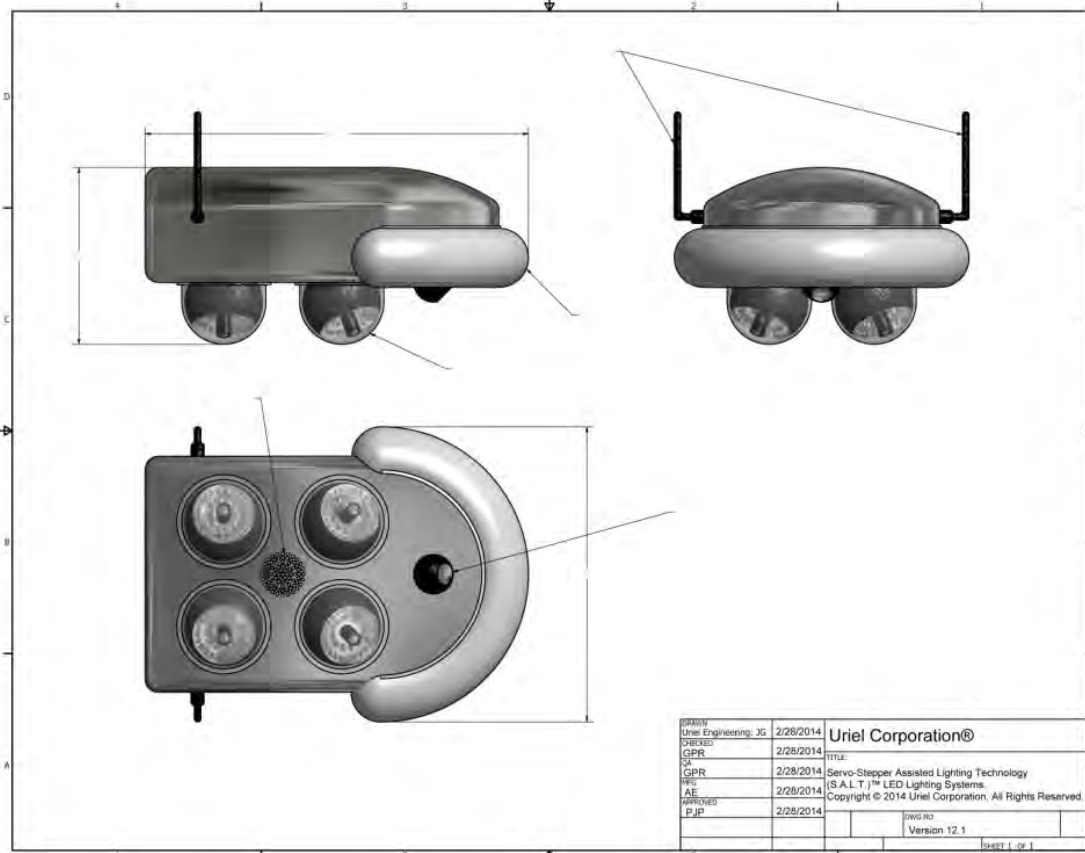
Page 4 of 8

L.E.D. is the New Standard in Lighting. Lumens³ is the New Standard in L.E.D.

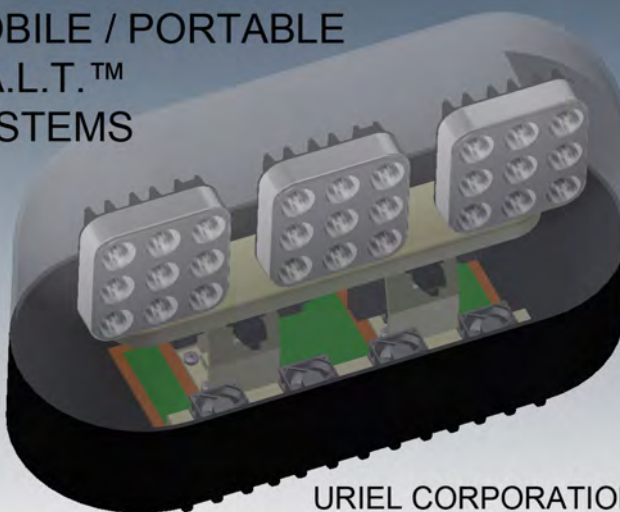
S.A.L.T.™



Servo-Stepper Assisted Lighting Technology
(S.A.L.T.)™ LED Lighting Systems.
Copyright © 2014, Uriel Corporation
All Rights Reserved
www.lumenscubed.com
www.urielcorporation.com



MOBILE / PORTABLE
S.A.L.T.™
SYSTEMS



URIEL CORPORATION®

For more information on any of
our products or services please
visit us on the Web at:
www.lumenscubed.com



Uriel Corporation®

PATENTED EXCLUSIVE (S.A.L.T.)™ LED SYSTEMS further include:

FURTHER EXCLUSIVE SYSTEMS:

VEHICULAR MULTI-SERVO /
STEPPER ASSISTED LIGHTING
TECHNOLOGY (S.A.L.T.)™ LED
SYSTEMS

INDOOR/OUTDOOR
MULTI-SERVO / STEPPER
ASSISTED LIGHTING
TECHNOLOGY (S.A.L.T.)™
LED SYSTEMS

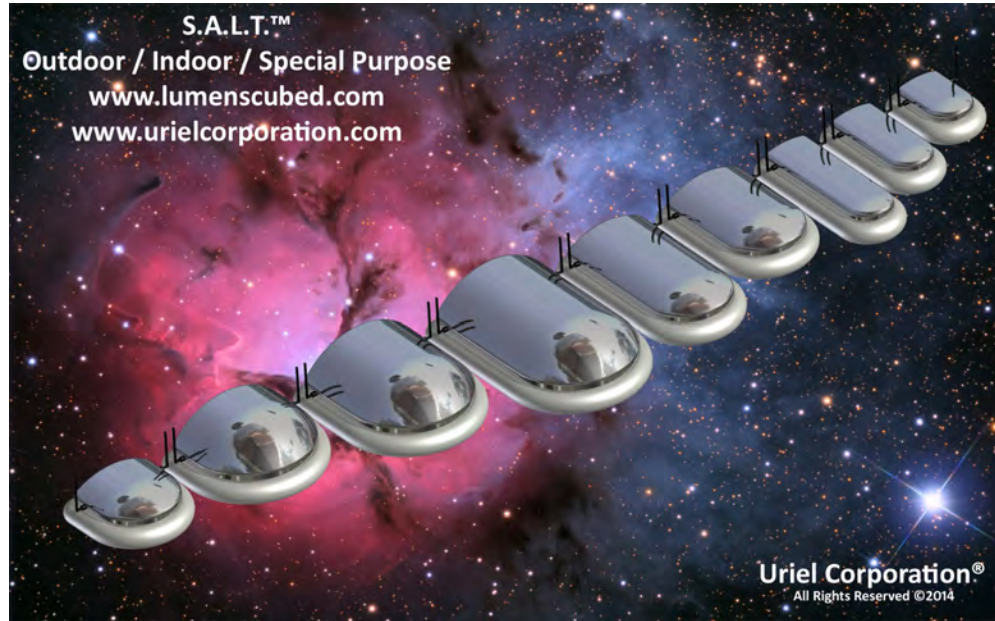
SPECIAL PURPOSE MULTI-
SERVO / STEPPER ASSISTED
LIGHTING TECHNOLOGY
(S.A.L.T.)™ LED SYSTEMS
EXCLUSIVE LIGHTING,
SENSING, & MONITORING.

Lumens[®] is a wholly owned Lighting
and Sensing Marketing & Sales
Subsidiary of Uriel Corporation.



L.E.D. is the New Standard in Lighting. Lumens³ is the New Standard in L.E.D.

SERVO / STEPPER ASSISTED LIGHTING TECHNOLOGY
(S.A.L.T.)™ PRODUCT FAMILIES:*



*Also available with Black Powder Coating.

About Uriel Corporation.



Uriel Corporation was established as a R&D Engineering Think Tank in 1984. Uriel Corporation's PATENTED, EXCLUSIVE MULTI-SERVO / STEPPER ASSISTED LIGHTING TECHNOLOGY (S.A.L.T.)™ LED SYSTEMS, THREAT MONITORING™ and SENSOR MONITORING™, and AREA SURVEILLANCE REPORTING™ Sensor Technology Options are the result of many years of Research and Development and Engineering undertaken by Uriel Corporation focusing on providing the world's new standard in lighting.

The Uriel Corporation LUMENS³ (LUMENS CUBED) marketing division is a marketing extension of Uriel Corporation that markets and sells Uriel Corporation's PATENTED, EXCLUSIVE LED Multi-Servo/Stepper Assisted Lighting Technology (S.A.L.T.)™ LED Systems.

Patents are Issued and Pending.

SERVICES AVAILABLE:

Technical Support
Installation and Setup
Maintenance
Hardware Support
Warranty

- Contact a Uriel Corporation Quotation Engineer today to assist you in developing your custom build-to-order LED Lighting System.

- For more information on any of our products or services please visit us on the Web at: www.lumenscubed.com

For fastest service please email all inquiries and purchase orders to: sales@urielcorporation.com.

Uriel Corporation Headquarters
One Westbrook Corporate Center, Suite 300
Westchester, IL 60154-5709
1 (708) 598-7314, sales@urielcorporation.com

Parent Company: www.urielcorporation.com

Lighting Systems Sales & Marketing Domains:
www.lumenscubed.com, www.lumens3.com

Uriel Corporation and Lumens³ are
Registered Trademarks of Uriel Corporation
Copyright © 2014, All Rights Reserved.
Template/Product Configuration Version 12.1

